



**St Joseph's Parish**

Chalfont St Peter, Gerrards Cross

# Reaching out campaign

---

## £1.85m Appeal

St Joseph's Parish, part of the Roman  
Catholic Diocese of Northampton,  
registered charity number 234091

[stjosephs.org.uk](http://stjosephs.org.uk)





# St Joseph's Parish

## New Community Hall Appeal

As a Carmelite Community, we are but the latest in a long succession who have had the privilege to be pastors here for over 110 years. Our Carmelite heritage stretches back at least 450 years, with our origins dating back well over 800 years. When we came here at the beginning of the 20th century and purchased the land, it was just a house and a green field site. We built the church building and the Parish Community was established. Since then, through the generosity, energy and vitality of successive generations, we have seen the life of the Parish continue to grow. Each generation has helped maintain and improve the buildings and supported the social and sacred life of the families who come here.

The whole area has changed over the years as houses and estates have developed around us, as the population has expanded in leaps and bounds since the coming of the railways in the middle of the 19th century. In this context, we should be conscious that all of us are but custodians of the life we have here, not only in terms of the Church that we are, but also of the responsibilities for outreach to the wider community that we have developed so well over the years.

Today, we need to appeal to you for help, for this new hall will mark the beginning of a new age for our life in the wider community that we serve. The new hall will be more eco-friendly and more economical to run. It has been designed to modern standards and will be able to resource a wide range of local community groups. It will also enable us to do, all that we do, better and to do more, and so build on the foundations of those who have gone before, providing a brighter and more sustainable future for our children. Please help us to make this happen, for our future starts today!

**Thank you for your support.**

**Fr Bob Davies, ODC**  
**Prior and Parish Priest**



# The history of the church

**St Joseph's is a large Catholic community of all ages, each on our own unique journey and influenced by the Carmelite spirituality of the priests that serve here. We have 830 families registered in our community.**

The first church was designed by Percy Aiden Lamb in an ornate Gothic Revival style and was opened in 1915 with a single aisle and a side chapel. Designed by Percy Kelly in a modern concrete style, a major extension in 1963 created the church that we have today. The church has stained glass windows from both the original church and the extension. Our Parish also includes the Church of the Most Holy Name, Denham. The parish serves Chalfont St Giles, Chalfont St Peter, Denham, Fulmer, Gerrards Cross, Iver Heath, Jordans, Stoke Poges and Tatling End. A total population of over 50,000. It is a large church with a pew capacity of about 300. Next to the church is a Priory which provides accommodation for the Carmelite priests. Behind the church and the priory is a large hall that serves both the parish and the community.

We come together to receive Jesus in the Eucharist, to grow in God's love and to follow the light of Christ's example, serving where we are called. We celebrate daily God's love in the Eucharist, prayer, service and fellowship. Our church is a place for anyone who desires and seeks peace and quiet, somewhere to come in times of difficulty or gratitude to sit and pray or light a candle.

On Sundays, the 9.00 Mass is a popular family Mass with a children's choir and musicians supporting the service.

To date, our church hall has been extensively used for parish activities, parishioner groups, community groups and three vital charities, who in turn serve other charities. We belong to the Diocese of Northampton, being one of its most southerly parishes, which is led by Bishop David Oakley.



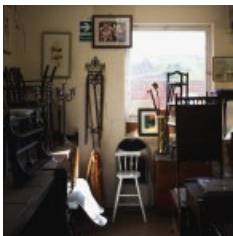
# Our work in the community

**In addition to its use by the church and its parishioners, the hall provided a vital space for three charities and many other local groups.**



## The London and Slough Charitable Trust

Takes food and drink to homeless and needy people in central London. A team of parishioners prepare sandwiches, fruit, biscuits, soup and tea every Monday morning and the delivery team takes the food up to London every Monday evening, serving up to 150 people. Alongside St Joseph's parishioners and community, St Mary's Anglican Church Beaconsfield and St Teresa's Catholic Church Beaconsfield supply the food for us to prepare and deliver. We also feed about 130 people in Slough every day. The London and Slough Charitable Trust will rely on this hall space to store its produce and to prepare the food and drink.



## St Joseph's Furniture Market

Collects and receives items of furniture from people in the local area who no longer need the item. The market is open every Saturday morning, when they sell the furniture at a reasonable price. Local charities who have benefitted recently include Age Concern, Aspire, Buckinghamshire Mind, Bucks Vision, Chalfont St Giles Infant School PTA, Chalfont St Giles Youth Club, Chalfont St Peter Academy PTA and Chalfont St Peter Youth Hall. Currently, the charity stores the furniture in a prefab next to the church hall, which has major defects and inadequate space, with furniture stacked to the ceiling. They need sufficient space to store and display their furniture and thus attract more potential buyers.



## St Vincent de Paul

Provides support to both individuals and family groups suffering from loneliness, mobility issues, vulnerability and poverty in our community. At the heart of their work, they make it their mission to be there, in person, for those who need them most. This takes the form of visits to the elderly and housebound, practical support and the provision of transport for shopping, medical appointments, and other as well as organizing social events. The SVP will use the new hall as a venue for their events including the garden party, pancake mornings and other social and fundraising events.

## Other local groups

The new hall will be used by many local activities including a youth theatre group, a dementia cafe, a bereavement club, a mothers' tea group, indoor sports, pilates, a bridge club, charity fundraising events, funeral wakes, wedding feasts, schoolchildrens' retreats, Alcoholics Anonymous, the Catholic Women's League, tea and chat groups and many more.

## The current hall

Our 1930/1960s community hall which for so long has served the church and local community groups so well is currently closed. An infestation of rats has badly damaged the structure of the building throughout and asbestos slates on the roof have created concerns around health and safety. All these problems have meant that the hall is no longer fit for purpose and will need to be demolished.



# St Joseph's Reaching out campaign

## Celebration of Church and Community

---

## A space to connect, a place to grow

---

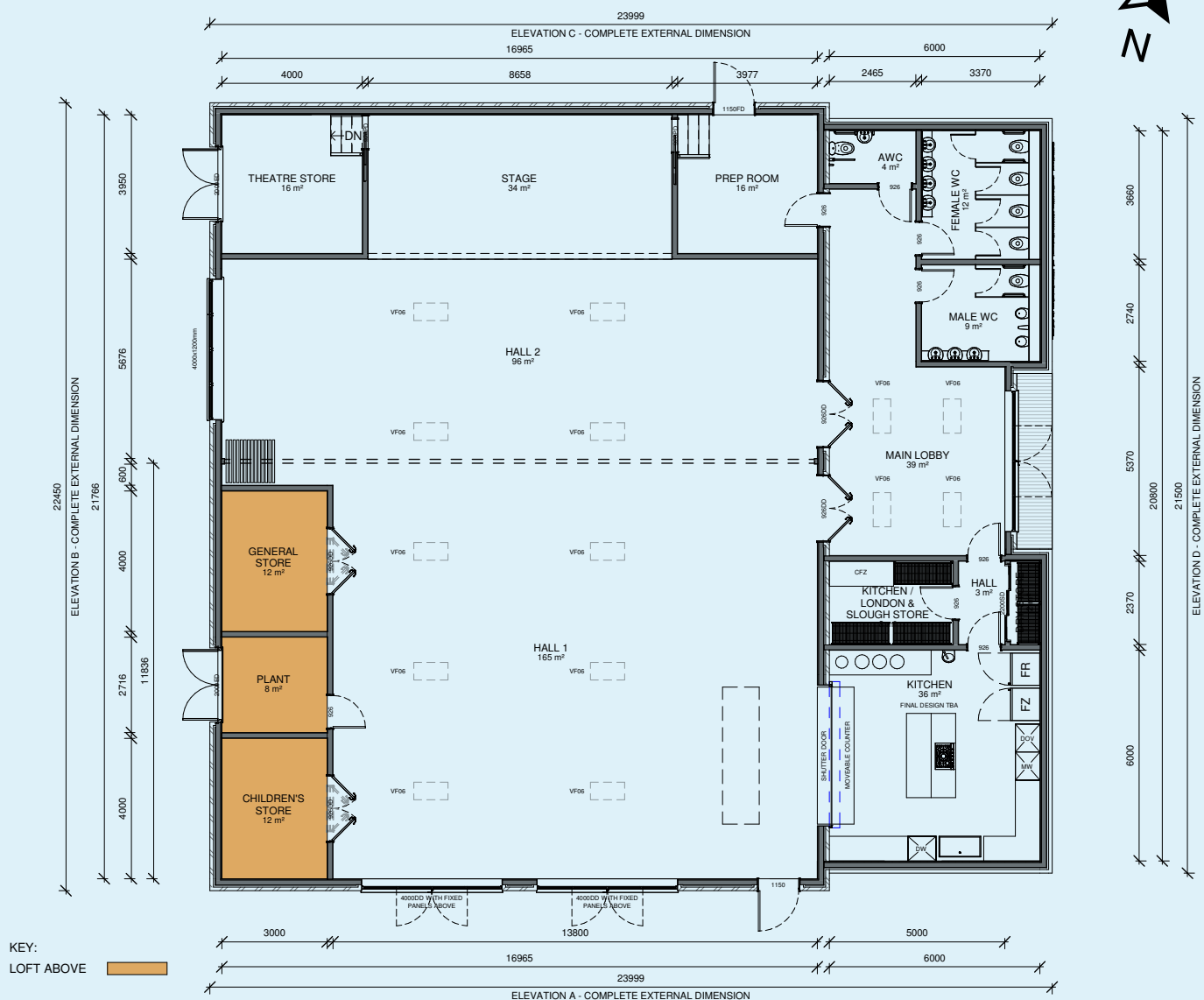
## Inspiring faith, fostering friendship

Reaching Out is our campaign that will not only replace existing facilities but will produce a Community Hall that will enable the church and the local community to come together in a way that fosters a strong community spirit.

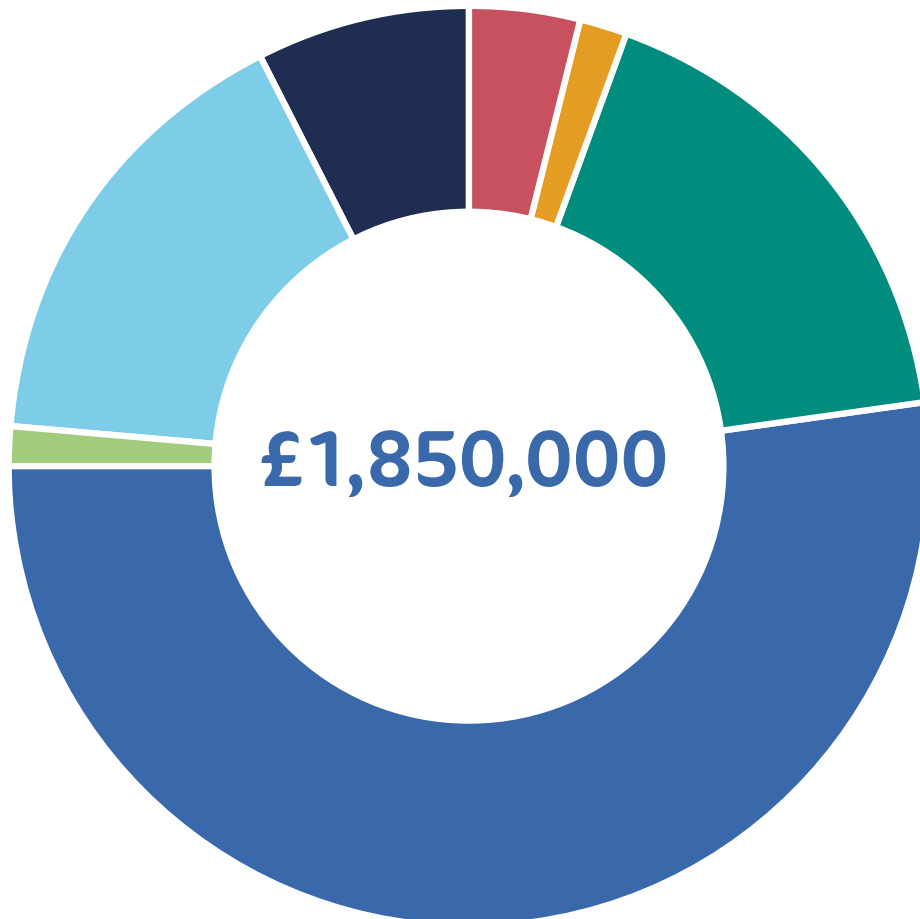
### The campaign will comprise:

- A new 250-seater eco and family friendly hall, that can be split into two large meeting rooms, with soundproofing between them, a kitchen that will satisfy the requirements of all the parish and community user groups, a disabled access to each room, male, female and disabled toilets accessible from both rooms and adequate storage facilities.
- Additional storage and display space that is needed by the St Joseph's Furniture Market. The position of the new hall will allow for construction of a new Furniture Market building that will provide extra space and a toilet for the charity's volunteers. The extra space will enable the Furniture Market to increase its contribution to the church and to many local charities.
- Two garages behind the Priory will be demolished and new garages built in front of the priory. This is necessary to improve the access to the new hall.

# Floor plan



# Project costs



Purchase of garage land / exchanged for building new garages for the Carmelites £73,000

Solicitors fees, planning and professional fees £34,000

Demolition, asbestos removal, site clearance and groundworks, temporary facilities £315,000

New buildings £968,000

Fit out of new hall / furniture, tables, seating etc and blinds or curtains £25,000

Contingency £300,000

Maintenance and management of new hall for 5 years £135,000





## Ways to support

1. Sending a cheque made payable to **St Joseph's New Hall**
2. Making an online payment to our account:

Sort code  
**60-06-11**

Account number  
**36303518**

Account name  
**RCDN St Joseph's New Hall**

Payment reference  
**NAME**

3. Complete a Gift Aid Form
4. Organise a Fundraising Event

## Contact details

**Malcolm Johnstone**  
newhall.stjosephgerrardscross  
@northamptondiocese.org

St Joseph's Parish, part of the Roman Catholic Diocese of Northampton, registered charity number 234091

[stjosephs.org.uk](http://stjosephs.org.uk)

